



Fire resistant steel trap door/ steel door

T 90-1-FSA „Teckentrup 62“

optionally with glazing, optionally with upper casing

Text example:

T 90-1-FSA fire-proof steel door tested in accordance with EN 1634-1 (DIN 4102). Single leaf door element. Type of handing DIN right. Door leaf 62 mm thick, rebated on three sides. Corner frame 1.5/2.0 mm thick, with 3-sided seal and bottom sill. Door leaf and frame galvanized and prime coated similar to RAL 9002 (Grey white). Mortice lock with latch lever in accordance with DIN 18250, prepared for profile cylinder. Black plastic round handle set, handle pivoted on bearing with tumbler insert (Bb) and 1 Bb-key. 2 KO-hinge with ball bearings, 1 top door closer, 3 security bolts. "Teckentrup 62" or equivalent.

Compile and tender according to requirements. Please refer to technical data below for respective details. Updated 1. March 2018

Technical data

Building authority approval	Z-6.20-1965 tested as per EN 1634-1 (DIN 4102) for installation in internal walls. Heat transfer coefficient in accordance with EN ISO 12567-1 (without glazing) $U_p = 1.3 \text{ W/m}^2\text{K}$	
Installation in	<ul style="list-style-type: none"> ▪ Masonry min. 175 mm ▪ Concrete min. 140 mm ▪ Leight weight construction stud walls * min. 84 mm ▪ Autoclaved aerated concrete <ul style="list-style-type: none"> - as per DIN 4165 min. 175 mm - reinforced type min. 150 mm ▪ Cladded steel beams F 90 	
	* F 90 as per DIN 4102 part 4 or in accordance with the general building authority test certificate. For permissible walls refer to the installation details tab.	
Approved dimensions	Modular dimension	W 500 – 1500 mm H 500 – 3000 mm
	With top light/ top casing up to	H 4000 mm
Handing	DIN right or DIN left	
Door (trap door) leaf	Double-skinned , trap door 4-sided Door rebated on three sides thin rebated Door leaf thickness 62 mm Sheet thickness 0,75 mm (standard) 1,0 mm or 1,5 mm Security bolt 1 - 3 Insulation mineral fibre board	
Frame	Corner frame 1,5/2,0 mm thick, trap door with 4-sided, door with 3-sidesd seal and floor mounting bracket. Mounting in exposed masonry without floor recess. Special equipment: block frame, counter or closed frame.	
Surface	Door leaf/frame galvanized and prime coated, similar to RAL 9002 (Grey white).	
Hinges, closing devices	<ul style="list-style-type: none"> ▪ 1 spring hinge and 1 KO-hinge with ball bearing or ▪ 2 KO-hinges with ball bearings and 1 top door closer 	
Fittings	<ul style="list-style-type: none"> ▪ Mortice lock with latch lever DIN 18250 ▪ Black plastic handle set, handle pivoted on bearing with tumbler insert (Bb) and 1 Bb-key 	
Glazing	Fire-resistant glass F 90, with aluminium glass-holding strips. Max. pane size 1000 x 2263 mm. Round glazing Ø 300, 400 and 500 mm with steel glass-holding strips, valvanized and prime coated, similar to RAL 9002 (Grey white). Special equipment: - round glass pane holding strip in stainless steel - rectangular aluminium holding strip in stainless steel look	

Also available in **STAINLESS STEEL**

Special equipment	<ul style="list-style-type: none"> ▪ Handle sets \ Lever/Knob sets: with short plate or rose escutcheon <ul style="list-style-type: none"> - plastic - light metal - stainless steel (various makes) ▪ Prepared for rose escutcheon ▪ Locks <ul style="list-style-type: none"> - Panic locks - Block lock (must be provided) ▪ Profile cylinder 40.5 + 40.5 mm ▪ Top door closer DIN EN 1154 <ul style="list-style-type: none"> - head assembly - with slide rail - with locking device - with smoke detector - ITS 96 (hidden) ▪ Secured drive lock ▪ Electric door opener ▪ Lock control (bolt contact) integrated ▪ Opening detector (reed contact) integrated ▪ Revolving door drives ▪ Hold-open devices ▪ Floor seals retrofittable ▪ 3D-hinges (with top door closer)
--------------------------	--

	Ordering dimensions / modular dimensions width x height	Clear passage size (corner frame) width x height
Standard sizes steel trap door	750 x 875	666 x 791
	875 x 875	791 x 791
	1000	916
	1250	1166
	1000 x 1000	916 x 916
Standard sizes steel door	1250	1166
	1250 x 1250	1166 x 1166
	875 x 1875	791 x 1833
	2000	1958
	2125	2086
	1000 x 1875	916 x 1833
	2000	1958
	2125	2083
	1125 x 2000	1041 x 1958
	2125	2083
1250 x 2000	1166 x 1958	
2125	2083	

(Special sizes: from 500 x 500 up to 1500 x 3000)

Further Qualifications
(Special equipment):



Smoke proof in accordance with EN 1634-3



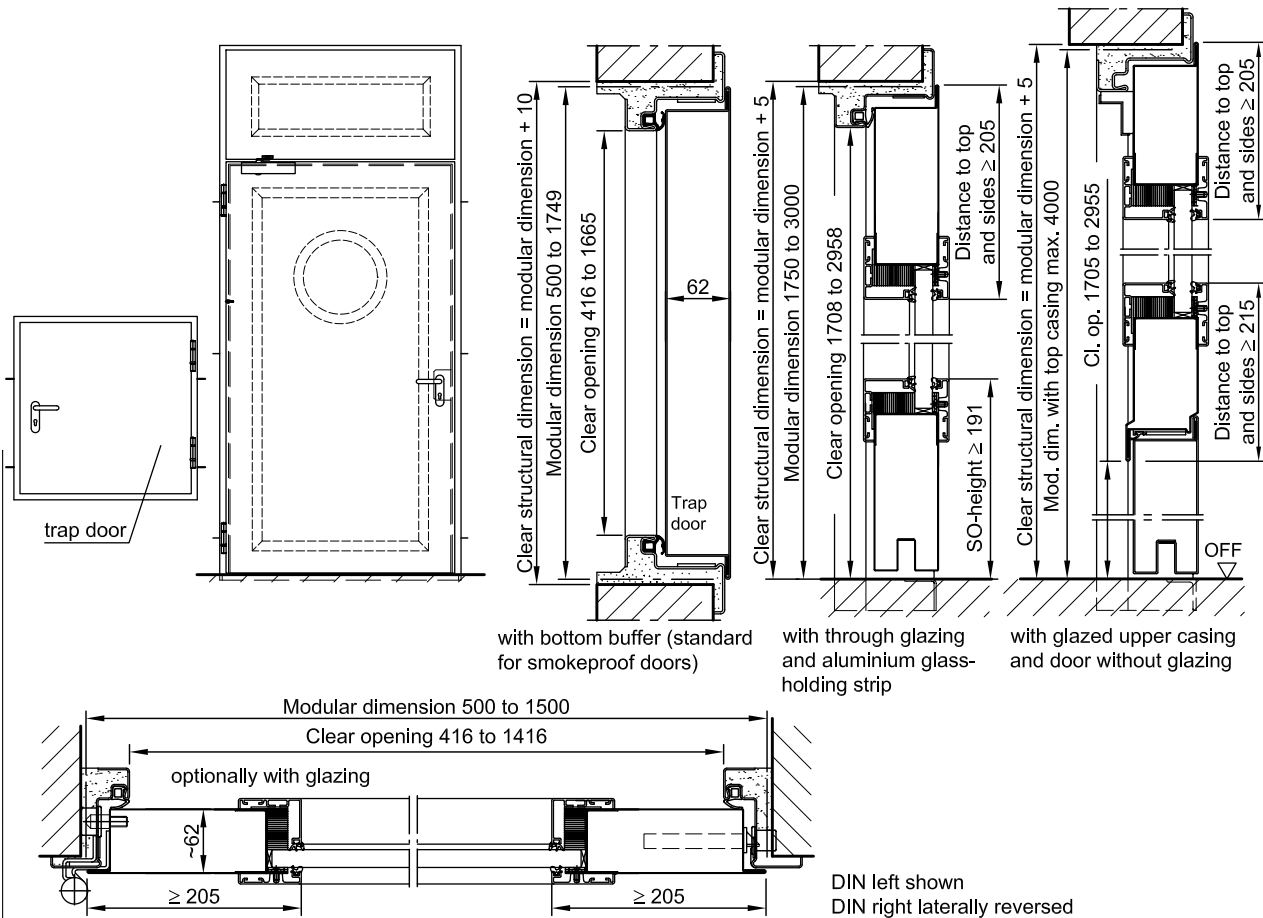
Sound insulated in acc. with
DIN EN 20140/717 Part 1
RW 33dB/ 42dB with retractavble floor seal
RW 33dB with sliding threshold seal
RW 33dB/ 42dB with bottom buffer and seal



Burglar-resistant in accordance with DIN EN 1627 - **RC 2, RC 3, RC 4**

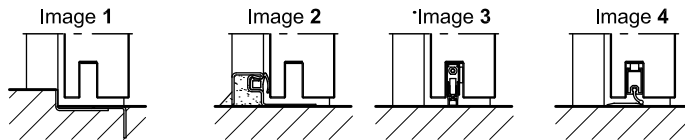
Fire resistant steel trap door/ steel door
T 90-1-FSA „Teckentrup 62“

optionally with glazing, optionally with upper casing



Floor connections:

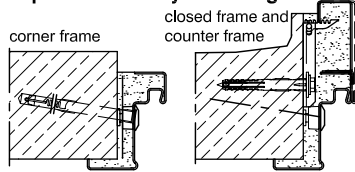
- Image 1: With bottom buffer
- Image 2: With bottom buffer/seal
- Image 3: With bottom seal (smoke-proof door with top door closer)
- Image 4: sliding threshold seal



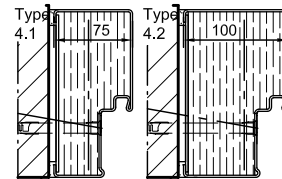
Installation in masonry/ concrete walls

concrete walls ≥ 140 mm
masonry walls ≥ 175 mm

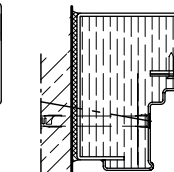
exposed masonry mounting



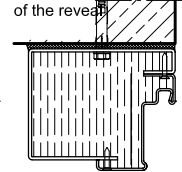
Flush installation



Type 2.3



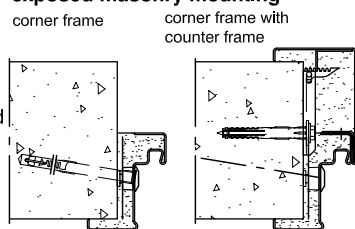
Type 2.2 in front of the reveal



Installation in autoclaved aerated concrete walls

(doors with top door closer)
Made of autoclaved aerated concrete blocks or made of reinforced autoclaved aerated concrete slabs.
Wall thickness min. 150 mm.

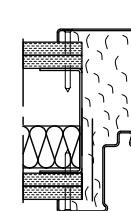
exposed masonry mounting



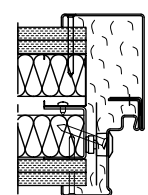
Installation in lightweight construction stud walls

(doors with top door closer) Installation walls ≥ F90 wall thickness 100 mm. For permissible walls refer to the installation details tab

counter frame

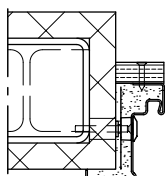


corner frame with counter frame



Installation on concealed steel supports

F90



Please find a detailed installation overview in the planning-, installation- and maintenance manual for 1-leaf and 2-leaf doors.