



Security steel door dw 42-1 „Teckentrup“ WK 2

Text example:

Security steel door dw 42-1 „Teckentrup“, tested in accordance with DIN ENV 1627-WK 2. Single-leaf door element. Type of handing DIN right. Door-leaf 42 mm thick, rebated on 3-sides. Corner frame 2.0 mm thick, with 3-sided seal. Door leaf and frame galvanized and powder-coated (primed) in Grey white, similar to RAL 9002. FS-Alu safety-handle set, class ES 1 DIN 18257. Safety profile cylinder P2 with anti-drilling and extraction protection BZ as per DIN 18252. 3 keys and security certificate. 2 KO hinges with ball bearings. 1 security bolt. Steel door dw 42-1 „Teckentrup“ or equivalent.

(Compile and tender according to requirements. Please refer to technical data below for respective details. Updated 1. July 2017.)

Technical data

Product	Security steel door dw 42-1 „Teckentrup“ in accordance with DIN ENV 1627 Heat insulation $U_D = 1,9 \text{ W}/(\text{m}^2\cdot\text{K})$ (1,0 mm) Heat insulation $U_D = 2,1 \text{ W}/(\text{m}^2\cdot\text{K})$ (1,5 mm)	
Installation in	<ul style="list-style-type: none"> ▪ Masonry min. 115 mm ▪ Concrete min. 120 mm ▪ Autoclaved aerated concrete as per DIN 4165 reinforced min. 175 mm min. 150 mm 	
Dimensions	width: 750 - 1250 mm	height: 1750 - 2250 mm
Type of handing	DIN right or DIN left	
Door leaf	double-skinned, thin rebated on 3 sides Door leaf thickness: 42 mm Sheet thickness: 1,0 or 1,5 mm Security bolts: min. 1 Reinforcement: flat steel Insulation: mineral fibre board	
Frame	Corner frame 2 mm thick, with 3-sided seal and bottom sill. Installation of frame: screw-mounting. Special equipment: counter frame 1,5 mm thick block frame or closed frame 2.0 mm thick	
Surface	Door leaf/Frame galvanized and powder coated (primed) similar to RAL 9002 (Grey white)	
Hinges, closing devices	<ul style="list-style-type: none"> ▪ 2 KO hinges with ball bearings (secured hinge bolt) 	
Fittings	<ul style="list-style-type: none"> ▪ Mortice lock with latch lever, prepared for profile cylinder ▪ FS-Alu safety-handle set, class ES 1 DIN, 18257 ▪ Safety profile cylinder P2 with anti-drilling and extraction protection BZ, DIN 18252 ▪ 3 keys and security certificate 	

Additional equipment

- Handle sets / Lever/Knob sets
 - light metal
 - stainless steel
- Locks
 - profile cylinder 35,5 + 30,5
 - panic locks
 - block lock (must be provided)
- Additional top and bottom locking
- Top door closer DIN EN 1154
- Wide angle spyhole
- Lock control (bolt contact), integrated
- Escape door opener
- Alarm wire insert
- Security chain (also lockable)
- Rain guard

	Ordering size/ Modular dim width x height	Clear passage size (corner frame) width x height
Standard sizes	750 x 2000	680 x 1965
	875 x 1875	805 x 1840
	2000	1965
	2125	2090
	1000 x 2000	930 x 1965
	2125	2090
	1125 x 2000	1055 x 1965
	2125	2090
	1250 x 2000	1180 x 1965
	2125	2090
	2250	2215

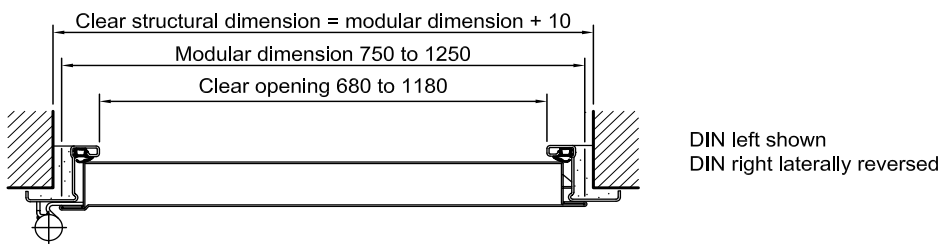
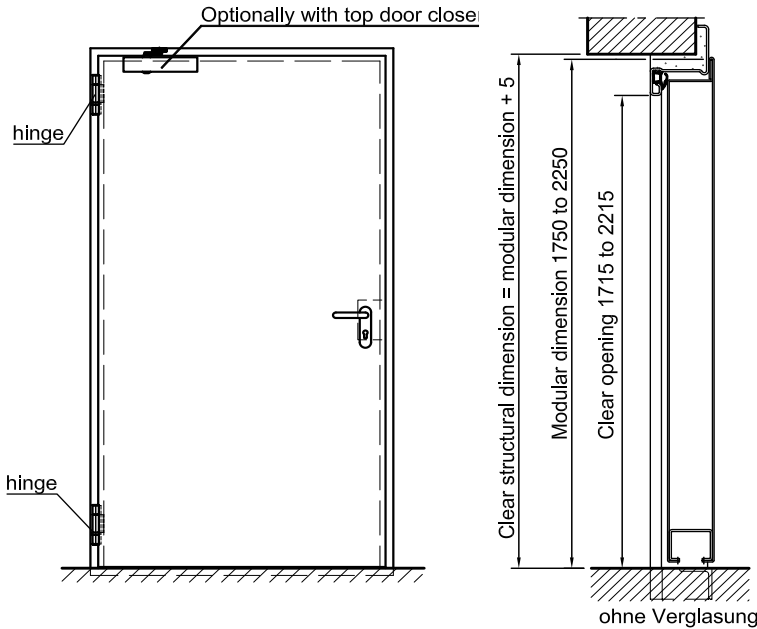
Further Qualifications
(Special equipment)



Sound insulated in acc. with DIN EN 20140/717 Part 1
RW 43dB with bottom buffer
RW 38dB with retractable bottom seal
RW 38dB with sliding threshold seal



Security steel door dw 42-1 „Teckentrup“ WK 2

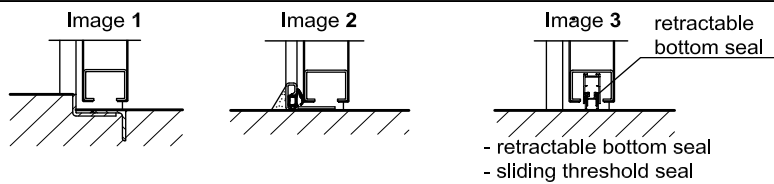


Floor connections

Image 1: with bottom buffer

Image 2: with retractable bottom seal

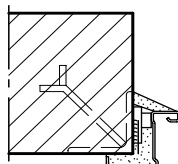
Image 3: with sliding threshold seal



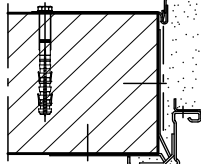
Installation in masonry/ concrete walls

concrete walls ≥ 120 mm
masonry walls ≥ 115 mm

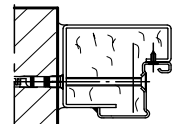
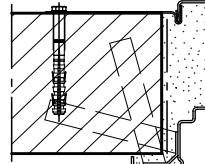
Weld-on assembly



Wall plug assembly



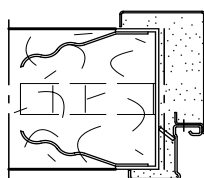
Wall anchor assembly



Installation in autoclaved aerated concrete walls

Made of autoclaved aerated concrete blocks or high precision units in acc. with DIN 4165 strength class 4 min. 150 mm or made of reinforced autoclaved aerated concrete slabs strength class 4. Wall thickness ≥ 150 mm

Wall anchor assembly



Wall plug assembly

